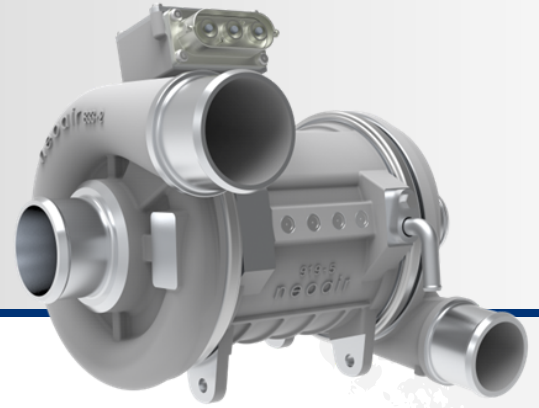


# CEF30

COMPRESSOR/ EXPANDER- FIXED



<b>Rated Power</b>	35 kW
<b>Peak Power</b>	40 kW
<b>Voltage</b>	450-750 VDC
<b>Design point</b>	PR3.0@290 g/s
<b>Speed Range</b>	30-110 kRPM
<b>Mass</b>	17 kg

**DC-Powered, High-Speed Electrically Driven Compressor: Perfect for Fuel Cell Applications**

- Oil-free, centrifugal compressor, Exander with fixed Guide Vanes
- Comes with a controller included
- Features liquid-cooled controller and compressor
- Designed with a robust, tested structure
- Compact and efficient design
- Lightweight for easy handling
- Tested and Robust design
- Other maps available

